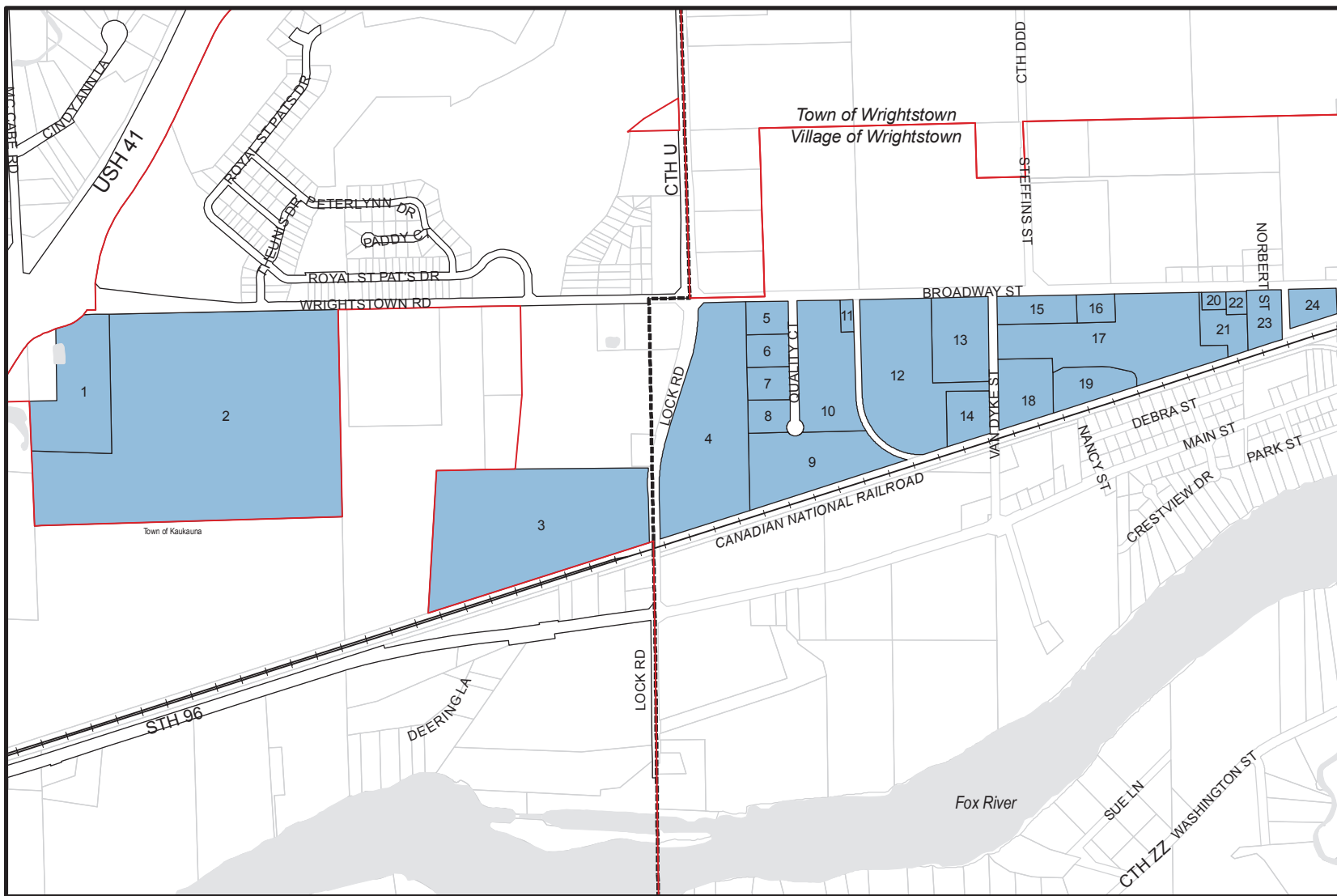
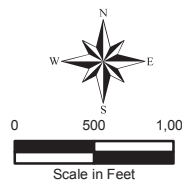


Village of Wrightstown



Source: Base Data provided by Brown County and Outagamie County.

Prepared September 2007 by the EAST CENTRAL WISCONSIN REGIONAL PLANNING COMMISSION.



Legend	
	Roads
	Railroads
	Town / Village Boundary
	County Boundary
	Business Park Lots

Wrightstown Industrial Park - Village of Wrightstown

Lot No.	Occupant / Status	Type of Business	Size (Acres)	Rail Siding
1	Peter Bowers Family / vacant land	NOT zoned Industrial at present time	12.01	No
2	Peter Bowers Family / vacant land	Rezoning to Industrial	75.69	No
3	CEI / Vacant Land	Future expansion	30.00	Potential
4	Coca-Cola	Distribution center	22.13	No
5	Bellin Health	Medical clinic	1.94	No
6	FNS Development / vacant land	Future development	1.94	No
7	FNS Development / vacant land	Future development	1.94	No
8	FNS Development / vacant land	Future development	1.89	No
9	FNS Development / vacant land	Future development	10.66	Potential
10	84 Lumber Company	Wholesale lumber with small retail section	9.83	Yes
11	Village of Wrightstown	Well #4	0.57	No
12	Spirit Fabs	Metal fabrication	16.14	Yes
13	Retroflex	Paper machine metal parts	6.67	No
14	Village of Wrightstown / vacant land	Current compost site	2.90	No
15	Greenleaf-Wayside Bank	Financial institution	3.92	No
16	Kids Care	Day care facility	1.50	No
17	CEI (Coating Excellence International)	Extrusion coating, laminating & printing operation	20.39	Yes
18	CEI (Coating Excellence International)	Extrusion coating, laminating & printing operation	4.78	Yes
19	Village of Wrightstown	Retention pond	3.64	No
20	Meuleman's Electric	Electrical service contractor	0.59	No
21	CEI (Coating Excellence International)	Extrusion coating, laminating & printing operation	1.39	No
22	Village of Wrightstown	Fire Station	0.66	No
23	Bowers Feed & Grain	Agriculture feed and grain	2.77	No
24	Wrightstown Manufacturing	Farm machinery equipment	2.14	No